

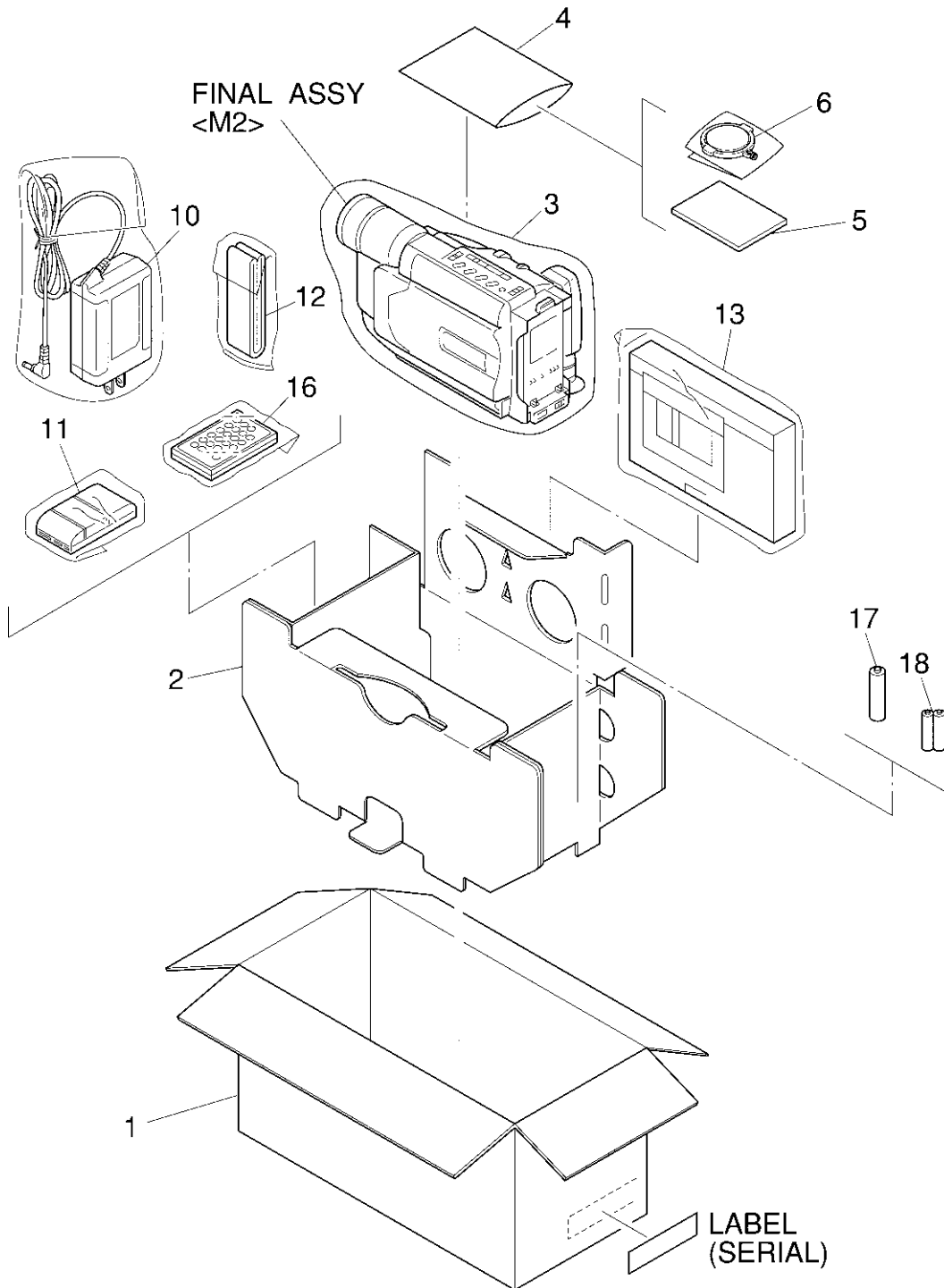
SECTION 5 PARTS LIST

SAFETY PRECAUTION

Parts identified by the ⚠ symbol are critical for safety. Replace only with specified part numbers.

5.1 PACKING AND ACCESSORY ASSEMBLY <M1>

The instruction manual to be provided with this product will differ according to the destination.



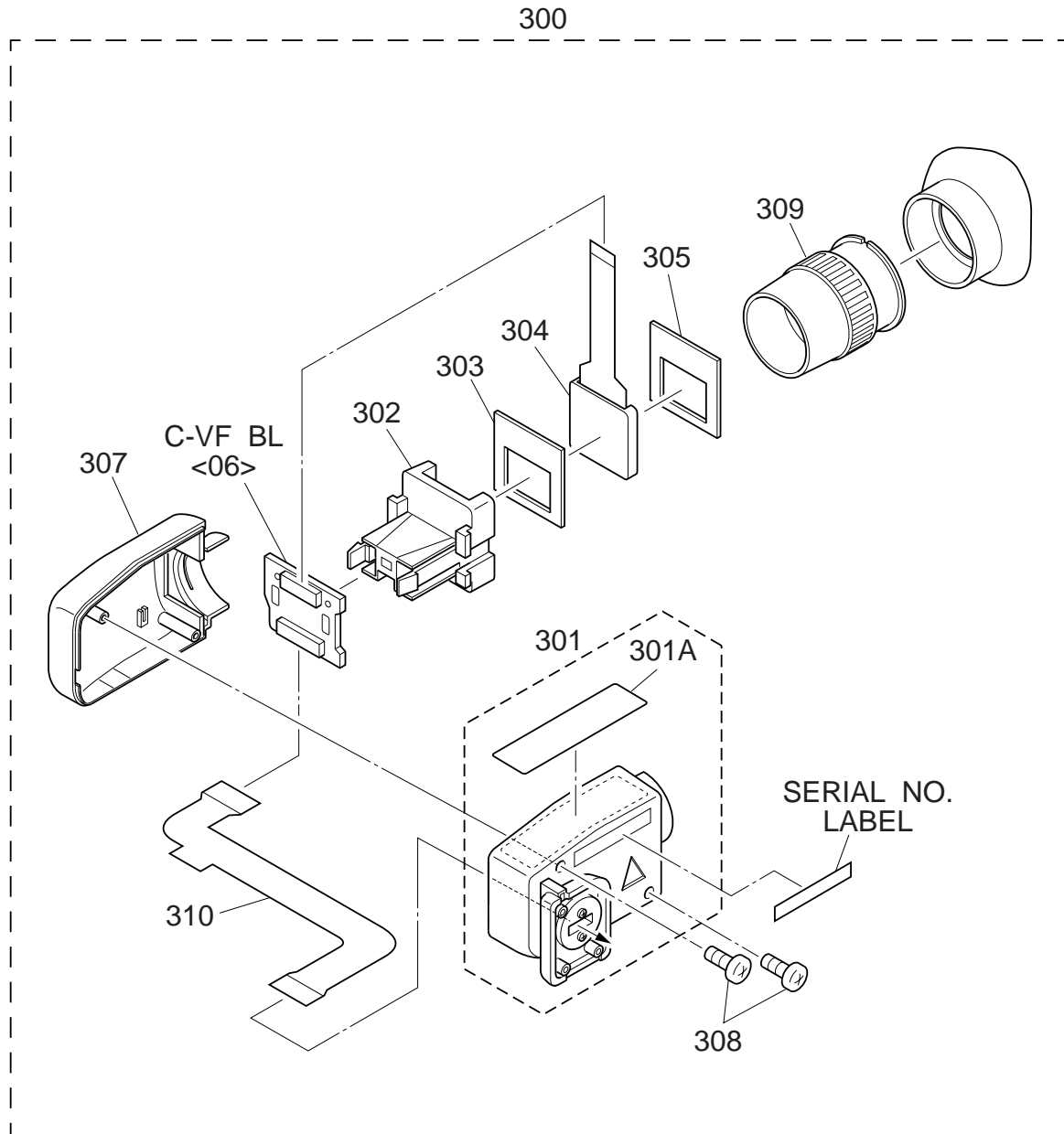
#	△ REF No.	PART No.	PART NAME, DESCRIPTION

PACKING AND ACCESSORY ASSEMBLY <M1>

1	LY32054-0A4A	PACKING CASE,AX777U
	LY32054-0A6A	PACKING CASE,SX877U
2	LY32065-001A	CUSHION
3	LY30023-002A	POLY BAG
4	QPA02003506	POLY BAG
△ 5	LYT0731-001A	IB(EN)
△	LYT0731-002A	IB(SP)
6	LY41538-002B	LENS CAP
△ 10	LY20739-001A	AC ADAPTER,AP-V10U
△ 11	YQ10629A	BATTERY PACK,BN-V11U
12	LY20186-001A	SHOULDER STRAP
13	YQ31963A-3	CASSETTE ADAPTER,C-P7U
	or YQ31963B-3	CASSETTE ADAPTER
16	LY42129-001A	REMOTE CONTROLLER,RM-V715U,SX877U
17	—	AA(R6)BATTERY,FOR CAS.ADAPTER
18	—	AAA(R03)BATTERY,X2,FOR RCU,SX877U

- INSTRUCTIONS
- EN ENGLISH
- SP SPANISH

5.2 ELECTRONIC VIEWFINDER ASSEMBLY <M4> [SX877UM]



Δ REF No. PART No. PART NAME, DESCRIPTION

ELECTRONIC VIEWFINDER ASSEMBLY <M4> [SX877UM]

Δ 300	LYH20242-001A	E.VF ASSY
Δ 301	LY32068-001A	BOTTOM CASE ASSY
301A	LY42882-001A	LABEL(COL/CAUT)
302	LY31942-001A	HOLDER(LED)

Δ REF No. PART No. PART NAME, DESCRIPTION

303	LY43013-001A	SPACER(HOLDER)
304	QLD0117-001	LCD MODULE
305	LY42171-001A	SPACER(LED)
Δ 307	LY10137-001C	TOP CASE
308	QYSPSGT1760D	TAP SCREW,X2
309	LY20309-001B	EYE P.ASSY
310	QAL0269-001	FPC

